

# REPLAT OF LOXAHATCHEE DISTRICT SUBDIVISION. LOXAHATCHEE GROVES

PALM BEACH COUNTY, FLORIDA

PALM BEACH LOXAHATCHEE COMPANY  
WEST PALM BEACH, FLORIDA

03731 for  
LOXAHATCHEE GROVES BK 12 PG 29  
T43 R41 BK E

STATE OF FLORIDA

To whom it may concern:  
This instrument was filed for record at  
5:25 p.m. on the 5th day of June  
1925 at the office of the Clerk of the  
County of Palm Beach, Florida.  
J. C. Sarno  
Clerk of the Court

A SUBDIVISION OF SECTIONS 17-18-19-20-21, THE N.W. 1/4 AND  
S.W. 1/4 OF SECTION 22, THE W. 1/2 OF N.W. 1/4 AND W. 1/2 OF  
S.W. 1/4 OF SECTION 27, SECTIONS 28-29-30, ALL OF SECTIONS 31-  
32 & 33 NORTH OF WEST PALM BEACH CANAL, THE W. 1/2 OF  
N.W. 1/4 AND ALL OF W. 1/2 OF S.W. 1/4 OF SECTION 34 NORTH OF  
WEST PALM BEACH CANAL, ALL IN T. 43 S - R. 41 E.

SCALE 1 IN. = 1000 FT.

DEDICATION -

State of Florida } ss  
County of Palm Beach }

KNOW ALL MEN BY THESE PRESENTS, that the Palm Beach  
Loxahatchee Company Inc., a corporation organized and existing  
under the Laws of the State of Florida, the owners in fee simple of  
the tract of land shown hereon as Loxahatchee Groves, have caused  
the same to be surveyed and platted and do hereby dedicate to the  
perpetual use of the public as public highways all the roads shown  
hereon, reserving however unto itself, its heirs, successors, assigns  
or legal representatives the reversion or reversions of the same  
whenever abandoned by the public or discontinued by Law.  
In witness whereof, it has caused these presents to be  
signed by its President and attested by its Secretary  
this 5th day of June A.D. 1925

Attos: *J. C. Sarno* Secretary  
*Wm. J. Sarno* President

ACKNOWLEDGEMENT -

State of Florida } ss  
County of Palm Beach }

I, the undersigned, an officer duly authorized to administer oaths  
and to appear in and for the County of Palm Beach, Florida, do hereby  
certify that the foregoing is a true and correct copy of the original  
as the same appears in the files of the Clerk of the Court, County of  
Palm Beach, Florida.

Subscribed and attested  
my hand and the seal of the  
County of Palm Beach, Florida,  
this 5th day of June, 1925.

My Comm. No. 1111

Witness my hand and the seal of the  
County of Palm Beach, Florida,  
this 5th day of June, 1925.

My Comm. No. 1111

Witness my hand and the seal of the  
County of Palm Beach, Florida,  
this 5th day of June, 1925.

My Comm. No. 1111

Witness my hand and the seal of the  
County of Palm Beach, Florida,  
this 5th day of June, 1925.

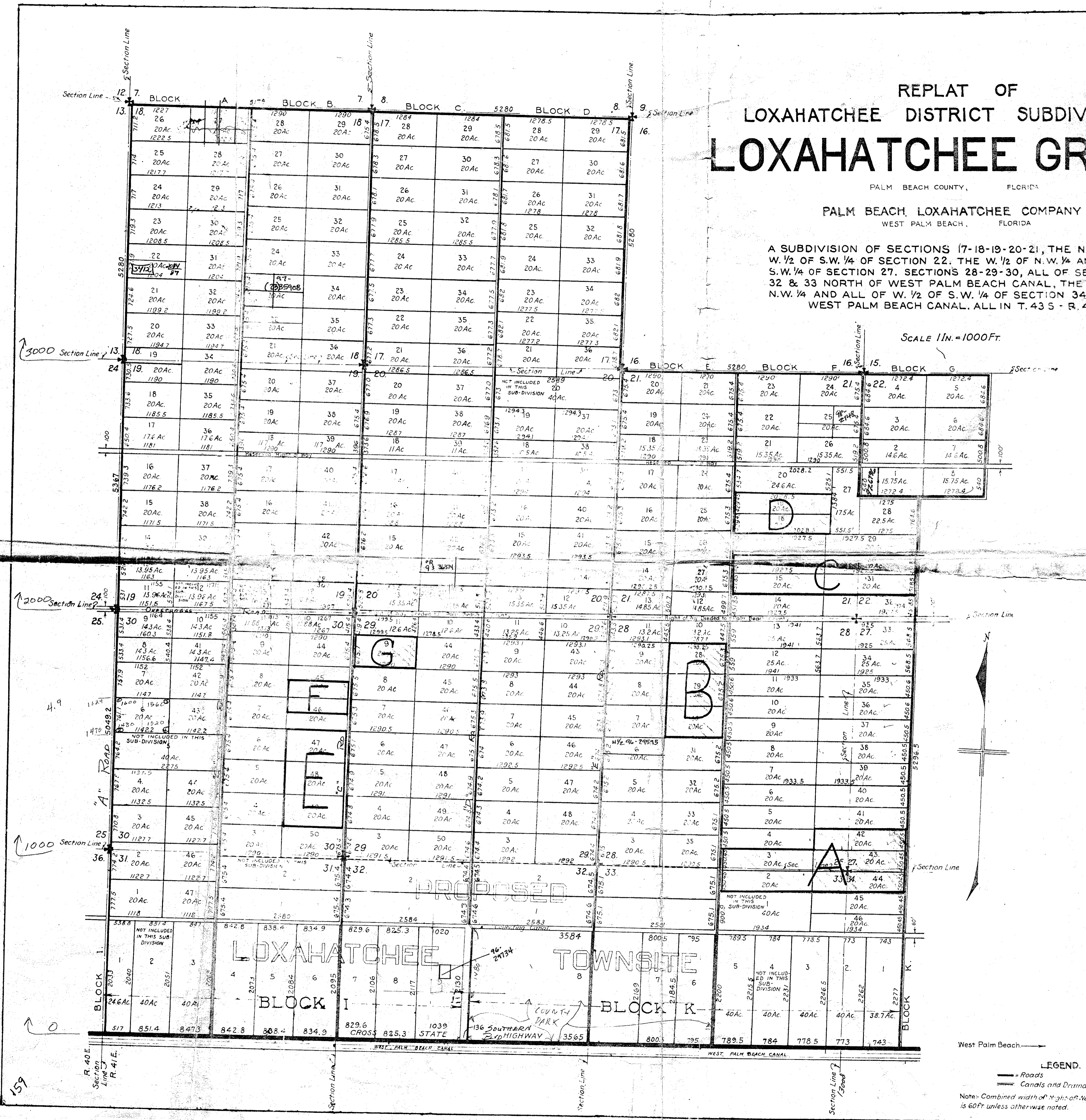
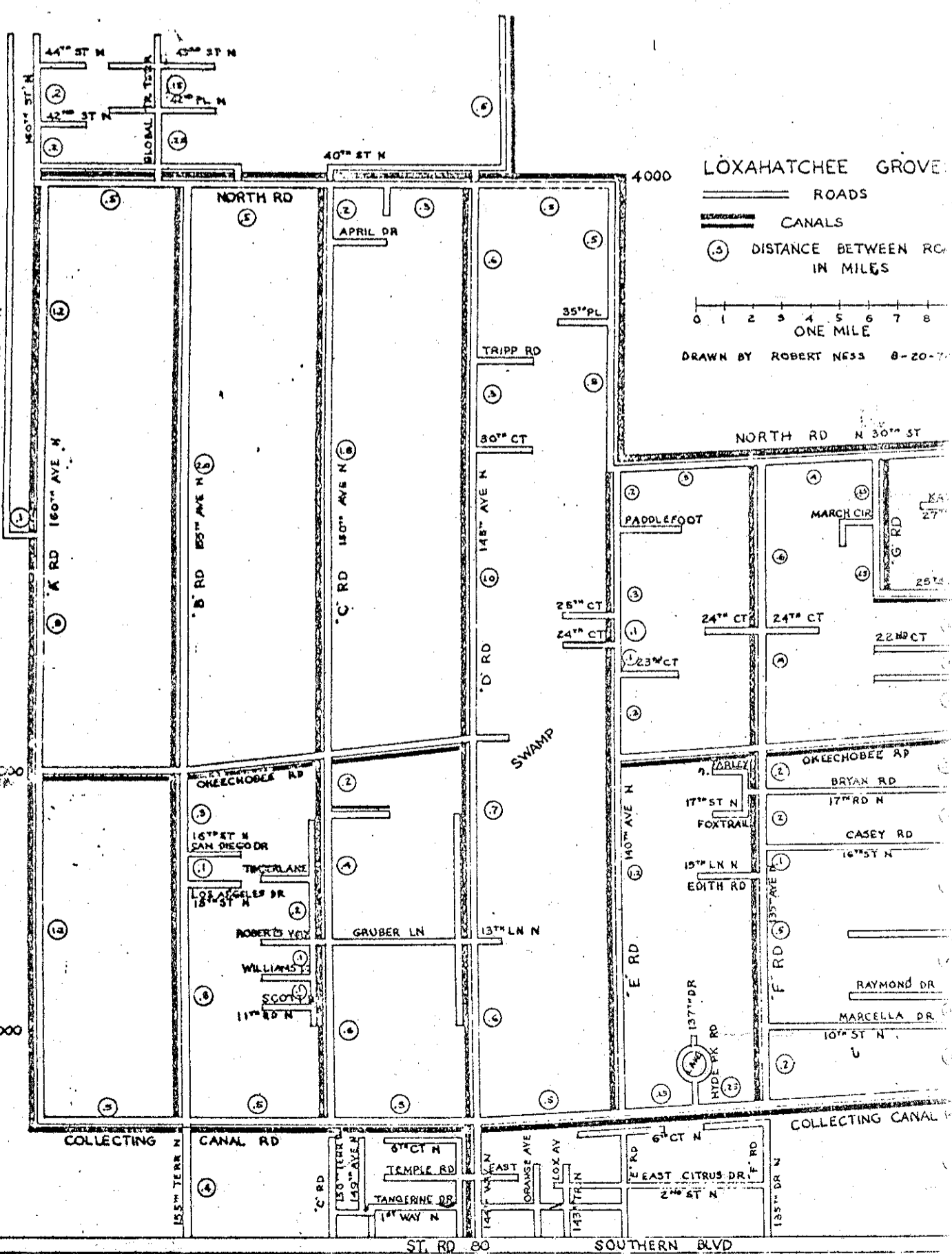
My Comm. No. 1111

Witness my hand and the seal of the  
County of Palm Beach, Florida,  
this 5th day of June, 1925.

My Comm. No. 1111

Witness my hand and the seal of the  
County of Palm Beach, Florida,  
this 5th day of June, 1925.

My Comm. No. 1111



West Palm Beach

LEGEND.

— Roads

— Canals and Drainage Ditches

Note: Combined width of right-of-way for ditch and is 60ft unless otherwise noted.

3000-048